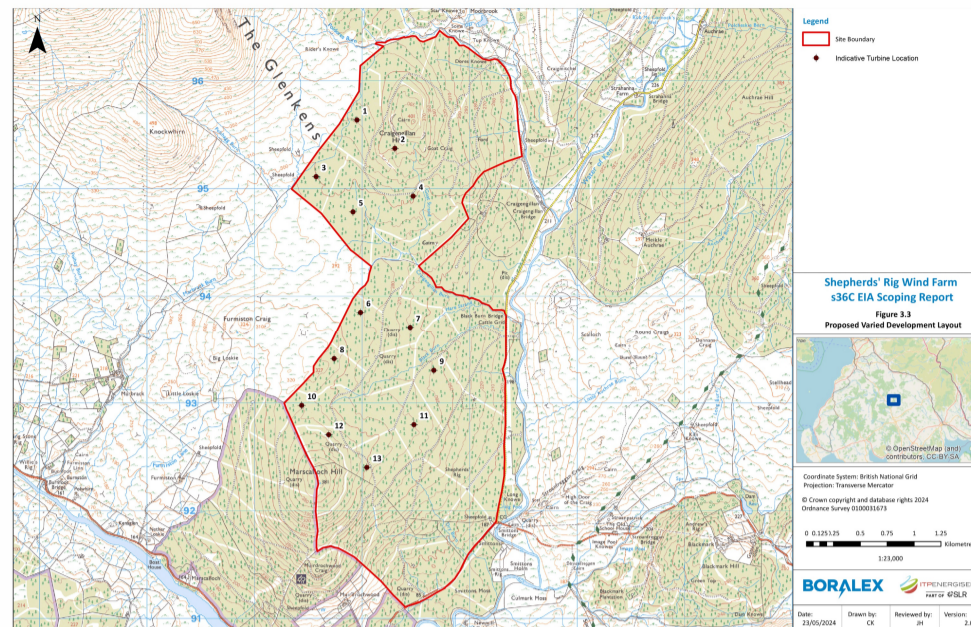


THE PROPOSED VARIED DEVELOPMENT



Boralex is currently developing a proposal to vary the consented Shepherds' Rig Wind Farm which gained consent in August 2023.

The Site remains the same as that of the Consented Development, located approximately 5 km to the east of Carsphairn and comprises commercial coniferous woodland plantation, bounded to the north and north-east by further forestry and to the west, east and south-east by open moorland.

At this stage, the variations being considered include:

- Removal of four turbines and associated crane hard standings;
- Increase in the maximum blade tip height of the remaining 13 turbines to 200 m.
- Relocation of three turbines slightly beyond the micro-siting allowance; and
- Amendments to part of the track layout to reflect turbine removal and relocation.

The locations of 10 of the proposed turbines are unchanged from the Consented Development, with the locations of the remaining three turbines only slightly adjusted to incorporate the constraints associated with larger turbines.

The total generating capacity of the turbines is anticipated to be in the region of 91 MW, 20.8 MW more than the Consented Development, but with a far greater energy yield, subject to final turbine model selection. The Consented Development included a 6MW battery energy storage array and it is intended to increase this to 50MW of storage in the variation scheme. The associated infrastructure still includes on-site access tracks, turbine foundations and crane hard standings, two temporary borrow pits, a substation and control building compound, on-site underground cabling, a temporary construction compound and a temporary concrete batching plant.

Turbine tip heights of up to 200 metres (656 feet) are being proposed to reduce the number of turbines on the site whilst increasing the amount of green energy able to be produced. Environmental, technical and commercial considerations throughout the design process will continue to inform the final number of turbines as well as their dimensions.

Submission of the Section 36 application to the Scottish Government is expected to be in January 2025.

Construction and access

Should the Proposed Varied Development be consented, construction would not be expected to commence until 2027.

Along with the wind turbines, the Proposed Varied Development will consist of a temporary construction compound; on-site access tracks, turbine foundations and crane hard standings, two temporary borrow pits, battery energy storage and control building compound, on-site underground cabling, a temporary construction compound and a temporary concrete batching plant; in addition to a substation to allow the green electricity generated to feed into the electricity network.

Route to Site

The potential effects of revised construction traffic will be assessed during the Environmental Impact Assessment (EIA) process, in consultation with Dumfries and Galloway Council.

An updated assessment of the potential impacts of access improvements along the B729 will also be carried out for the Proposed Varied Development, included as an appendix to the EIA Report. This appraisal will be based on the results of an updated swept path analysis (required due to the changes in abnormal indivisible loads associated with the proposed taller turbines). Off-site road works will likely be limited in extent, with potential vegetation clearance required at localised sites. Removal of any trees, if required, would be subject to compensatory planting and agreed with Scottish Forestry.